

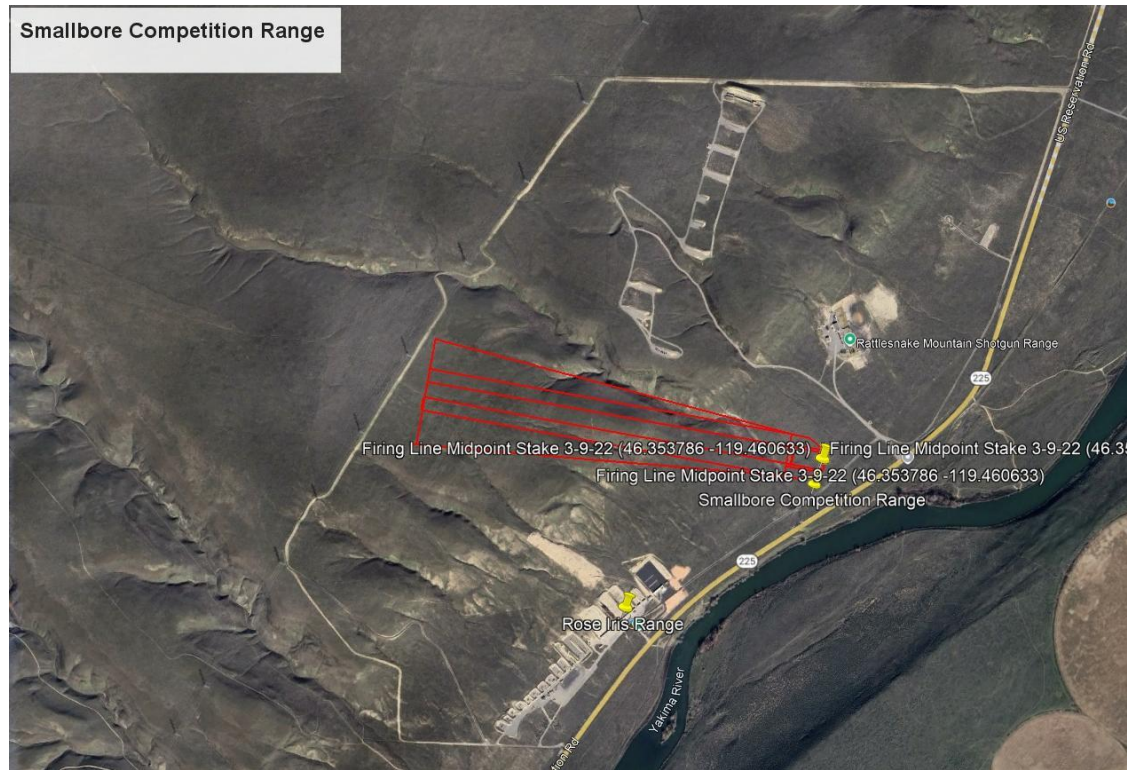
# TCSA 25 Yard Youth Smallbore Match Orientation

Phil Keuhlen  
Match Director

# Overview

- Range Location
- Match Description
- What to Bring
- Safety, safety, safety
- Arrival
- Match Conduct

# Smallbore Competition Range

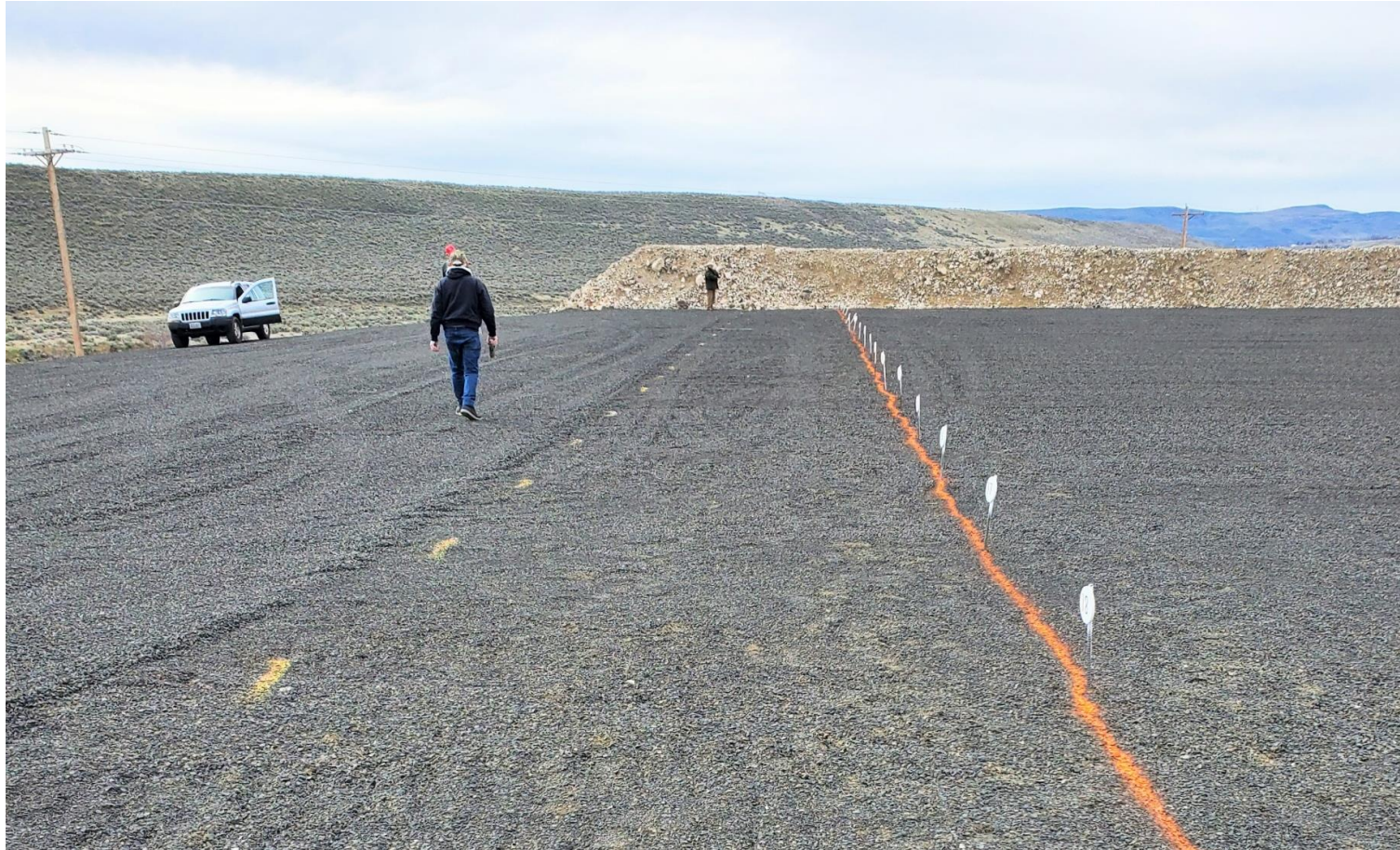


# Conex Office - Latrine



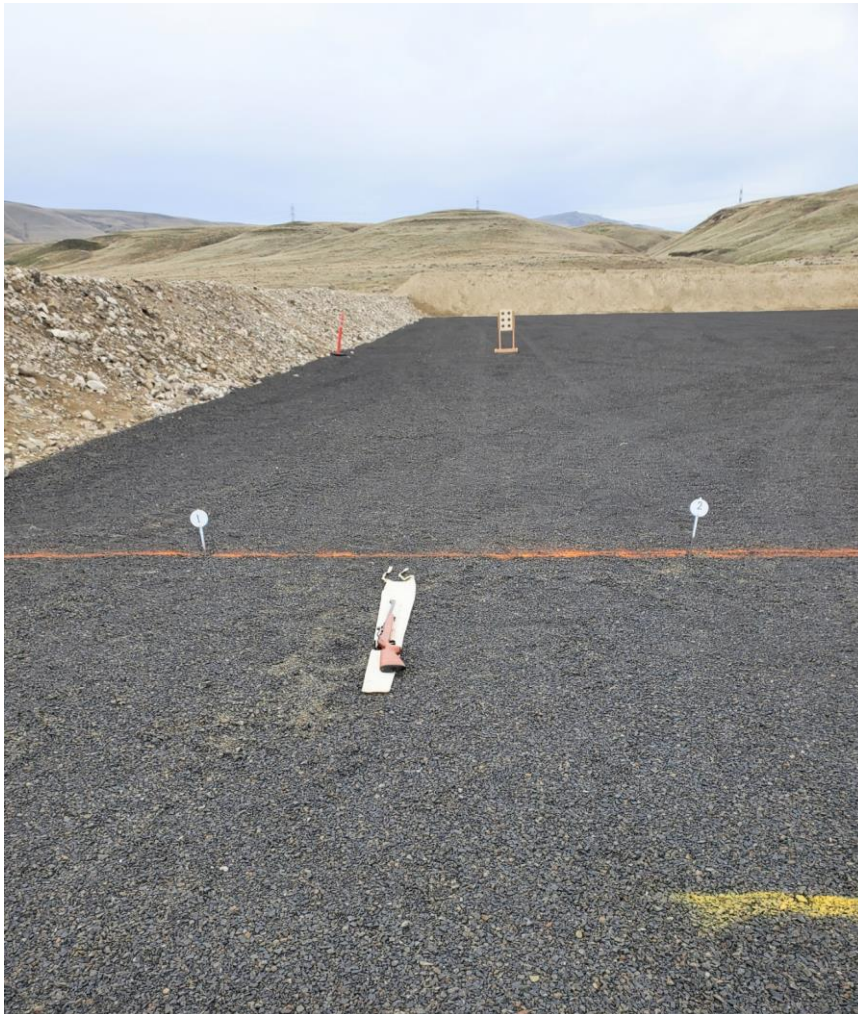


# Firing Line, Ready Area, Parking





# Firing Positions - 25 Yd Target Line





# Range Entry (R) – Exit (L)



# Match Description

## **Firearms:**

Bolt action .22LR smallbore rifles. Rifles must be single loaded. Rifles may be shot with iron sights (open or metallic diopter types), or with any optic. There are no restrictions on sling use, firearm weight, or sight magnification. Triggers must be mechanical Use of loaners is allowed by prior arrangement with Mr. McNeal.

## **Rests:**

Separate front rests (including bipods) and rear bags may be used to shoot from the prone position.

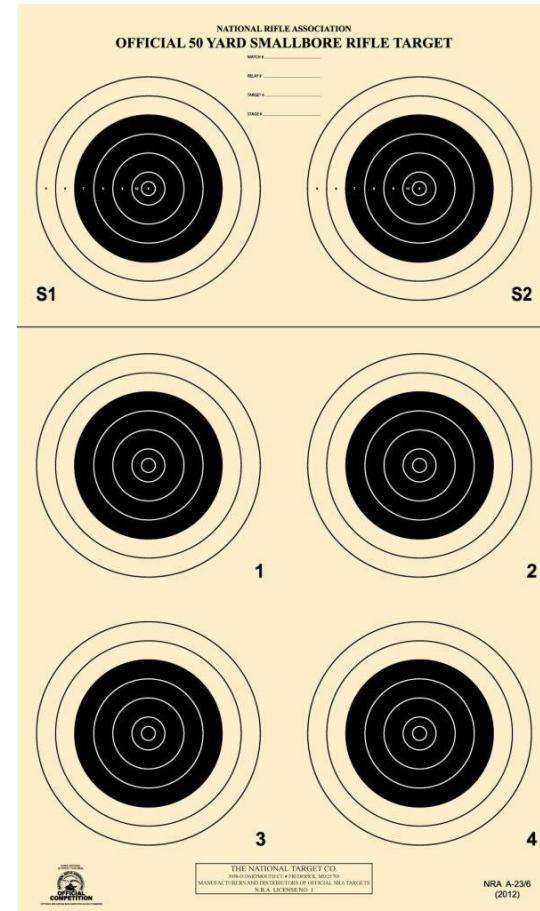
## **Ammunition:**

Any brand of factory loaded .22 caliber Long Rifle ammunition may be used and must consist of the original, unaltered factory cartridge case, powder and projectile.

## **Course of Fire:**

Unlimited sighters above line

5 record shots per bull





# What to Bring

## • Mandatory

- Eye Protection for Every Participant
  - (Loaners available)
- Ear Protection for Every Participant
  - (Loaners available)
- Empty Chamber Indicator for Every Firearm
  - (Loaners available)
- .22LR Bolt Action Rifle
  - (Loaners by prior arrangement)
- .22LR Factory Loaded ammunition
  - (club donated available)
- Pen/pencil/marker
  - Loaners available)
- Appropriate clothing for weather

## • Optional

- Binoculars or spotting scope
- Shooting Mat (loaners available)
- Elbow pads (loaners available)
- .22LR Factory Loaded ammunition (club donated available)
- Sling , bipod or rest
- Folding chair for adult supervisor/off relay shooters
- Ammo block (loaners available)
- Sunscreen
- Water

# Safety

- The safe conduct of a match with YOUTH shooters is our primary focus and requires extra diligence.
- Every youth shooter must be supervised by a dedicated adult
  - If one adult will supervise shooters on separate relays, the off-relay youth must remain quietly within the ready area. Horseplay will not be tolerated
- Firearms stay in vehicles at all times, until the shooter's relay is called to the line
- No youth spectators

# Safety: The Range is Cold Unless Declared Hot by the Match Director

## When the Range is **Cold**

- Do not handle any firearm
- Firearms unloaded, magazines removed, actions open, and Empty Chamber Indicator installed
- Move to the Ready Area
- Go down range to retrieve or set targets as directed by RSO/MD
- 
- 

## When the Range is **Hot**

- Hearing and eye protection is required
- Shooter move to the firing line
- When directed, firearms may be made ready
- When directed, firearms may be loaded
- When directed, competitors may shoot at their assigned target
- No individual may go forward of the firing line



# Safety w/Youth Shooters

- OBEY ALL RANGE SAFETY OFFICER(RSO)/MATCH DIRECTOR(MD) COMMANDS.
- ALWAYS KEEP THE MUZZLE OF YOUR FIREARM POINTED DOWN RANGE (OR UP WHEN MOVING TO AND FROM THE FIRING LINE).
- ALWAYS KEEP YOUR FINGER OFF THE TRIGGER AND YOUR FIREARM UNLOADED WITH THE ACTION OPEN AND AN EMPTY CHAMBER INDICATOR INSTALLED UNTIL DIRECTED BY THE RSO/MD.
- IF A CEASE FIRE IS CALLED – IMMEDIATELY LAY DOWN FIREARM WITH MUZZLE POINTING DOWN RANGE, STEP BACK INTO THE READY AREA, AND FOLLOW RSO/MD INSTRUCTIONS
- RAISE YOUR HAND IF YOU HAVE ANY MISFIRES OR FIREARM MALFUNCTIONS THAT YOU CANNOT CLEAR, SO RSO/MD CAN SAFELY CHECKOUT THE PROBLEM.

# On Arrival

1. The range is COLD
2. Leave all firearms and equipment in vehicle
3. Each shooter and adult supervisor reports to Conex Office signs in & receives their target and target stand
  - Notify match director if one adult will supervise two shooters, or if two shooters will share one firearm to facilitate relay/position assignments
4. Once all shooters have checked in the Match Director announces relay and position assignments. Each shooter marks their target with their name, relay and shooting position.
5. Once all shooters have marked their targets, the Match Director conducts a safety briefing.

# Match Conduct

1. The Match Director declares the range HOT, and directs shooters in the first relay to bring their cased firearms, targets, and gear to their shooting position. ***No ammunition may be loaded at this time and an empty chamber indicator must be in place in each firearm.***
2. When all shooters are ready, the Match Director declares the range COLD and directs the first relay shooters to place their targets down range.
3. Once all targets are in place, shooters return to the ready area. The Match Director then declares the range HOT, and first relay shooters take their positions and make ready. ***No ammunition may be loaded at this time.***
4. When shooters are ready, the Match Director then gives the command to load firearms, checks the line ready and directs shooters to commence firing. They may shoot as many sighters as they desire and may go back & forth between sighters and record shots. Shooters may only fire 20 shots for record, five shots on each of the 4 record bulls on each target.
5. When all shooting completes, rifles are made safe. When all rifles are safe, the Match Director directs all first relay firearms to be returned to vehicles. He then gives the command for range COLD, and shooters retrieve their targets.
6. When a second relay is ready to be shot, repeat steps 1-5 for the second relay
7. When all firing is complete, and the range is cold, shooters pass targets to another shooter, adult supervisor or Match Director for scoring. A magnified 0.224" scoring plug shall be used for close shots. The target is returned to the shooter for score verification. When all targets are scored and verified, they are returned to the Match Director to determine the order of finish.
8. Shooters return target holders and police their brass. Our goal is to leave the firing line and range cleaner than we found it.
9. Shooters meet at the CONEX and scores are announced.
10. Shooters are dismissed and depart. Match Director secures range.



# Odds & Ends

- A healthy way to approach this competition is for youngsters to track their improvement match to match, not focus on finishing position
- Publication of competitor names/scores on TCSA HP FB page, TCSA newsletter?
- Additional card for practice before/after match?
- Questions?